



WEEK BEGINNING 28TH NOVEMBER 2025

Events this week:

Monday 1 st December	Year 4 Christmas Unwrapped @Church
	Deadline to order Christmas lunch
Tuesday 2 nd December	KS2 Panathlon
	SEN Coffee Morning 8.45am – 10.00am
Friday 5 th December	Non Uniform Day
	Christmas Market 5.30pm – 7.30pm

Looking forwards:

Tuesday 9 th December	KS1 Nativity to parents 9.15am and 5.30pm
Wednesday 10 th December	Christmas lunch MUST BE PRE-ORDERED Christmas Jumper Day
Thursday 11 th December	RockSteady Concert
Friday 12 th December	Ks2 Christmas Concert – 2.15pm
Tuesday 16 th December	Reception Nativity production to parents 9.10am Years 1, 2 & 3 Pantomime @ South Hill Park
Wednesday 17 th December	Years 4, 5 & 6 Pantomime @ South Hill Park
Thursday 18 th December	Christmas Church Service – whole school
Friday 19 th December	LAST DAY OF TERM – 1.30PM FINISH TIME

Do you know anyone with a child who will start Reception in September 2026?

We have been delighted to show so many children and their parents around our lovely school on school tours so far this term, with many more planned!

If you know of anyone who has a child that will be planning to start school in September 2026, please remind them to book on to a tour every Tuesday at 10am – they can simply email the office to book on:

secretary@stmicheast.co.uk

Share our poster and socials with them!



**ST MICHAEL'S
EASTHAMPSTEAD**

Looking for a Reception place for September 2026?

Look no further - book on to a tour with us today, no matter where you live in Bracknell.

About St Michael's Easthampstead
A small primary school who proudly puts our children and families first and goes *'above and beyond with love'* in everything we do!

Why us?

- Ofsted 'Good' in all areas (2024)
- Small, friendly, family focused
- Church attendance not necessary!
- No set catchment area - join us no matter where you live in Bracknell!

**Book on to a tour!
Visit us every Tuesday morning at 10am**

Contact us:
01344 420878
secretary@stmicheast.co.uk

Facebook, Instagram, and QR codes.

Follow our socials!

Please, please do give our social channels a follow so that when we start to post more content, you can share it far and wide! We are a small school doing our best to promote ourselves to the wider Bracknell community, especially given we do not have a set catchment area, and so any help you can give as a parent community to let people know what our lovely school is all about, and that we are here, will go a long way! Use these links or scan the QR codes:

Facebook: <https://www.facebook.com/share/1B7YM35NwM/>



Instagram: <https://www.instagram.com/stmicheast> or @stmicheast





Christmas lunch is on Wednesday 10th December. This MUST BE PRE BOOKED by Monday 1st December via School Grid.



Head Teacher Award Winners

- Acorns - Freya – for working so hard with her phonics and for being a kind Acorn
- Year 1 - Phoebe – for aiming high and persevering in her writing
- Year 2 - Tiago – for aiming high in our history and science lessons
- Year 3 - Harry – for aiming high in his learning and showing school expectations especially listening carefully
- Year 4 - Freddie – for working hard throughout the week and making a special effort to push himself in his learning
- Year 5 - Ava M – for growing in confidence with contributing to class discussions

Well done to you all!

Year 2 News

Today, Year 2 had a very special visit from four amazing owls! The children loved meeting each one and were fascinated to learn lots of interesting facts about how owls hunt, what they eat, and how they use their incredible eyesight and silent wings. The highlight of the visit was when every child had the chance to hold an owl at the end. It was a wonderful learning experience that brought our topic to life!



**St Michael's Easthampstead C of E
Primary School
'Let's Connect' Coffee Morning**

*An opportunity to connect with other parents, meet friends,
feel involved, and possibly learn something new.*

What's on:

*'Let's Connect' over coffee and conversations and
ask any questions to our SENCo! Join us for a
delightful morning of parent-to-parent bonding.
Share experiences, make new friends and build a
strong SEND community.*

Welcome to all parents, your connections matter!
If you would like to come along, please join us at
St Michael's Easthampstead School on
Tuesday 2nd December 8:45am to 10:00am in the
library.

For any further information, please speak to Mrs
Clover (SENCo).



**EBSA (Emotionally Based
School Avoidance) Toolkit**
Designed to support children who are
unable to attend school because
they are emotionally overwhelmed.



**Monday 12th January 12:45-2:45pm AND
Monday 19th January 12:45-2:45pm**

** Please note that it is necessary to attend both sessions.*



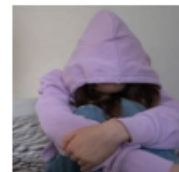
**"Building resilience in
children is not about
making them tough.
Resilience is the ability
to recover from
difficulties and manage
how you feel."**



Week 1	Week 2
2 hours - parents only	2 hours - parents and child
<ul style="list-style-type: none"> • What is EBSA? • The signs to look out for • How to support your child • How to build 'being in school' resilience • The magic of 'YET!' • Boosting self-esteem • What you can expect schools to do 	<p>An opportunity to make tools and learn more about:</p> <ul style="list-style-type: none"> • Breathing to feel calm. • Distractions from our worries • Challenging the 'What ifs?' • Small steps ladder • Coping in school tools

The sessions will be delivered by Inge Taylor from the Family Learning Team.
For more information about this course, please email Inge.Taylor@bracknell-forest.gov.uk

To book a place for you and your child, please click [here](#)





Christmas Market Friday 5th December 5:30-7:30pm

Dear Parent

We are busy planning for our Christmas market. This is the biggest event of the year, and we are determined to make this a success and raise lots of money to help your children over the next year.

This is where we need your help. We are asking for donations for Christmas hampers which we will then raffle off. Below is a list of donations that we need (please bring something from your child's class list, this is in an attempt to not have lots of one thing!). If you are happy to donate more than one item that is amazing. Thank you.

If you own a business and are happy to donate a voucher for your service, please do let us know as these would be a lovely treat to add to the hamper.

Finally, we also need baskets/hampers. If you have anything that we can use or any cellophane, ribbon etc. that would be amazing too.

We would like the donations delivered to the gazebo during the week of the 17th November. Any more information or questions please contact stmichaelseasthampsteadpta@gmail.com.

Donation Request

Reception Mince Pies Christmas napkins Box of chocolates Family size panettone Crackers for cheese	Year 4 Panettone White wine Jam After eight mints Celebration/Heroes tub/tin
Year 1 Sparkling wine/Bucks fizz Stuffing mix Quality Street or Roses tub/tin Christmas Pudding Tree Decorations	Year 5 Red wine Shortbread Christmas crackers Chocolate Coins Wrapping paper
Year 2 Cranberry Sauce Dates Prosecco Selection boxes Christmas Cards	Year 6 Chutney for Cheese Red Wine Tub/ tin of sweets Gift Tags Sharer crisps
Year 3 Tree chocolates Sharer crisps Candy Canes Box of biscuits White Wine	If you have other items that you feel would make a great addition to some of our Christmas hampers like NEW – toiletries, gifts, toys please feel free to bring or check with a member of your PTA or class rep, thank you.

Christmas Market

Collection Dates 2025

We would appreciate your support in collecting the following items for our Christmas Market

- Packaged Sweetie donations 10th -14th November**
 Lollies, multi bags, chewie sweets. NO NUTS
 Please drop off in the gazebo.
- Hamper donations 17th to 21st November**
 More information attached.
 Please drop off in the gazebo. Please don't allow children to carry glass on the school site.
- Cakes Thursday 4th December**
 Shop bought or handmade with ingredients list please.
 NO NUTS
 Please drop off in the gazebo.
- Bottles and Chocolate for Adult Tombola Friday 5th December. We will be having a non-uniform day too.**
 Please drop off in the gazebo. Please don't allow children to carry glass on the school site.

Thank you

PRESTIGE CHRISTMAS CAMP

9am till 3pm
£20 per day
5-11 Years

Monday 22nd December
Tuesday 23rd December

**WILDRIDINGS PRIMARY SCHOOL
NETHERTON,
BRACKNELL,
RG12 7DX**

BOOK VIA WEBSITE:

**WWW.PRESTIGESPORTSCOACHING.
COM/HOLIDAY-CAMPS**

**PRESTIGE SPORTS
COACHING**



Experience and Education through Birds of Prey

**Moss End Garden Village,
Bracknell, Berkshire**



Hands on Sessions



Educational Talks



Photography



Birthday Parties



Owl Experiences



Award winning Falconry Centre



Open Tuesday - Sunday
www.feathersandfur.co.uk



Beautiful Birds of Prey, Gift Shop, plenty of parking, cafe on site, and lots of other shops to visit.



Consultation on proposed Admission Arrangements for Sandhurst School for Year 7 in September 2027.

Introduction

Sandhurst School is an academy school. The Corvus Learning Trust is the admission authority for the school.

Consultations usually take place when admission authorities wish to make changes to their admission arrangements, or they have not been consulted on in the last 7 years.

The Corvus Learning Trust is consulting on the following changes to their admission arrangements:

Proposed changes to the oversubscription criteria:

- Adding Children Eligible for Service Premium

Why are we proposing these changes?

1. Upholding the Armed Forces Covenant

This is the **primary driver**. The Armed Forces Covenant is a commitment by the nation to ensure that those who serve, or who have served, and their families are treated fairly and are not disadvantaged in accessing public services, including education, due to their service.

Mitigating Disadvantage:

- Service children are highly mobile. Their families frequently move (in-year and overseas postings), leading to
- **disrupted education, gaps in learning, and difficulties in securing**
- **school places** outside of the main admissions round when schools may already be
- full.

The Admissions Code:

- The School Admissions Code in England allows (and strongly encourages) admission authorities to give priority to Service children eligible for the SPP in their oversubscription criteria. By adding this criterion, the institution is directly complying with
- the spirit and intent of national guidance on supporting military families.

2. Addressing Mobility and Transition

The mobility of Service families creates unique challenges that this criterion helps to solve.



Securing a Place in Advance:

- The new criterion helps ensure that Service children with a **confirmed**
- **posting** to the area can secure a school place
- **before the family arrives,**
- providing essential stability and reducing stress for the child and parents.

Mid-Year Admissions:

- Service children are far more likely to require an **in-year admission**
- (moving outside of the normal school transfer times). Prioritising them helps them get into a suitable school quickly, minimising the interruption to their studies.

How can you respond?

We would like to hear your views. Please send any comments regarding the admission arrangements to: consultation.education@bracknell-forest.gov.uk

Please mark your email SANDHURST SCHOOL CONSULTATIONS

The consultation takes place between **24 November 2025 and 19 January 2026**

Copies of the proposed arrangements can be obtained on the school's websites:

<https://www.sandhurstschool.org.uk/>

What happens next?

After the consultation closes the responses will be collated and presented to the Corvus Trust, who will consider any comments and determine the arrangements.

The outcome will be published on the school's website by 15 March 2026.

Supporting Your Children Workshops 2025 - 2026









To book a space email Inge.Taylor@bracknell-forest.gov.uk

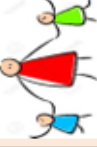
Each course is a standalone 2-hour session, is universal (not specific for SEND) and for adults supporting not the children themselves so please arrange childcare if needed

Once you have completed an enrolment form your space will be confirmed

Please only book if you are **going to be able to attend** to avoid other parents missing out.

All sessions unless stated otherwise take place at The Bracknell Open Learning Centre

Supporting Children to Overcome their Anxious Thoughts and Worries Exploring how anxiety affects primary aged children learning simple, effective techniques to support children to overcome their Anxious Thoughts and Worries.	
Wednesday 14th January 2026	6.30 – 8.30 pm
Monday 13th April 2026	6.30 – 8.30 pm
Monday 8th June 2026	6.30 – 8.30 pm
Managing Behaviour in a Positive Way A session exploring positive behaviour strategies enabling parents to gain practical tools for handling challenging behaviours with confidence and care.	
Monday 12th January 2026	9.30 – 11.30 am
Thursday 05th March 2026	6.30 – 8.30 pm
Thursday 23rd April 2026	6.30 – 8.30 pm
Monday 22nd June 2026	6.30 – 8.30 pm
Parenting your pre / early-teens in a Positive Way (aged 10 – 13) An insight into parenting, looking at positive behaviour strategies, different ways to strengthen communication / connection with your pre-teen child.	
Wednesday 4th February 2026	6.30 – 8.30 pm
Parenting your teen in a Positive Way (aged 13 – 16) A session focused on using positive approaches to guide teenage behaviour, building stronger communication and connection during the teen years.	
Thursday 12th February 2026	6.30 – 8.30 pm
Encouraging Resilience – Keep Calm and Bounce Back Gain practical tips, leaving you inspired and equipped to help children bounce back stronger; no matter what life throws their way	
Monday 26th January 2026	6.30 – 8.30 pm
Transition to secondary school Gain practical tips, share experiences, and learn how to support your child through the exciting, sometimes challenging transition to secondary school.	
Monday 29th June 2026	6.30 – 8.30 pm
Transition: Reception to Year 1 and beyond The move from Yr R to 1 is a big step in your child's learning journey. Session helps parents understand what the transition involves and how to support.	
Thursday 25th June 2026	6.30 – 8.30 pm
A healthy night's sleep Sleep is essential for children's wellbeing, learning, and behaviour. Get practical tips to help children build healthy, lasting sleep habits	
Let me know if you would like to be on the list for future dates	

Reducing Sibling Rivalry A supportive session, to give parents and caregivers tools to strengthen sibling bonds, whilst creating a calm and connected family environment.	
Let me know if you would like to be on the list for future dates	
Family Dynamics Family life comes in many forms, and every child deserves to feel secure / supported. Session offers practical guidance navigating varying dynamics.	
Monday 9th February 2026	9.30 – 11.30

We are also trialling the following toolkits to take place at the Open Learning Centre

To book a space or get further information email Inge.Taylor@bracknell-forest.gov.uk

Each toolkit is universal (not SEND specific) & not suitable for younger siblings to attend.

Once you have completed an enrolment form your space will be confirmed

Please only book if you are going to be able to attend to avoid other parents missing out.

EBSA (Emotionally Based School Avoidance)

A 2-week toolkit (you are expected to attend both sessions)

Week 1 – parent only session looking at - What EBSA is, how to support your child to build 'being in school' resilience and what you can expect schools to do.

Week 2 – parents + child (need school's permission for child to attend) looking at supporting children to challenge 'What if's?' produce resilience tools and next steps.

Please contact me for details of dates.



AI Chatbots and companions

A simple search of "AI Chat" within the App store highlights the number of AI apps already available, many are rated as 18+ so it is important to speak to our children about them and the risks associated with them. Examples of AI chatbots that your child may have heard of are Character.AI (18+) and My AI from Snapchat (13+).

What are the risks?

- Over reliance on AI companions, for example they may replace 'real life' friendships or over reliance on using them for homework or problem solving.
- Exposure to inappropriate content.
- Privacy/data risks.
- Misinformation as not all information shared is correct and can be biased.

How can I protect my child?

- Check age ratings of any apps or websites that your child accesses.
- Discuss the risks of AI chatbots with them and have open conversations about why they may be using them.
- Set up appropriate parental controls on their devices/broadband.
- Chat to your child regularly and ensure your child knows that they should talk to you or another trusted adult if anything concerns them.

Further information

<https://www.esafety.gov.au/newsroom/blogs/ai-chatbots-and-companions-risks-to-children-and-young-people>

New Technology

As some children may be receiving new technology or related games at Christmas, here is a quick reminder of the importance of setting up appropriate parental controls.



Games/Consoles

- Check age ratings: look at the PEGI rating of any new games. *Remember, PEGI rates the gameplay so whilst it is important to review age ratings, you must also check to see if it has any communication elements.*
- If a game does allow your child to communicate with others, then adjust or disable the settings as appropriate to your child.
- On the device itself, set up applicable controls such as restricting spending limits. Follow the links below to find out how to set up Parental Controls for popular devices here:

Xbox: <https://www.xbox.com/en-GB/family-hub>

PS5: <https://www.playstation.com/en-gb/support/account/ps5-parental-controls-spending-limits/>

Nintendo Switch: <https://www.nintendo.com/en-gb/Hardware/Nintendo-Switch-Parental-Controls/Nintendo-Switch-2-Nintendo-Switch-Parental-Controls-2873385.html>

Tablets/Smart phones

Set up parental controls on the device to prevent purchases, restrict content viewed and adjust privacy settings. Furthermore, remember to check any apps your child requests to check that they are suitable for their age. Follow the links below to find out more:

iPhones/iPad: <https://support.apple.com/en-gb/105121>

Android Device: <https://support.google.com/googleplay/answer/1075738>

Further information

<https://www.internetmatters.org/parental-controls/>

The Safety-First Smartphone

The Other phone is a new smartphone, which includes "SafetyMode" software. The software automatically blocks nudity, profanity, and bullying language in real time. You can find out more here: <https://otherphone.co.uk/>.

Smart Phone Free Childhood also list some alternatives that you could consider here: <https://www.smartphonefreechildhood.org/alternatives>.

Please note, that the inclusion of these models does not constitute an endorsement or recommendation. While these devices may provide a 'safer' alternative to traditional smartphones, there are still potential risks associated with children using any type of phone.

Roblox

Following a recent ITV investigation*, which found extremist content on Roblox, we thought we would provide a reminder of what you need to be aware of. Roblox is a platform consisting of a collection of games. Players can either create games or play games that other users have created. It is free to download (however subscription options and in game/app purchases are available) and can be played across numerous devices. **A lot of the content is user generated, which means not all games will be suitable for your child to view/play.** If your child is playing Roblox, it is important to monitor what your child is accessing and set up appropriate parental controls. **PEGI rate Roblox with a Parental Guidance label, this is because it is considered a platform with a huge level of user generated content.**

What should I be aware of?

Game content – as mentioned, users create games so the content/themes may not be appropriate for your child. Roblox label content based on the type of content rather than by age. The labels are Minimal, Mild, Moderate and Restricted.

Chat Facility - Players can chat with each other (users under the age of 13 need parent permission to access certain chat features though). You can turn communication off completely or add restrictions, such as only able to communicate with friends.

Virtual Currency - Players can buy Robux (their virtual currency) to buy in-game upgrades or accessories.

How do I report abuse and block users?

This article outlines the different reporting facilities:

<https://en.help.roblox.com/hc/en-us/articles/203312410-How-to-Report-Rule-Violations>

What else can I do?

Chat to your child regularly about what they are doing online and remind your child that if anything is worrying them, then they should talk to you or another trusted adult.

Further information

<https://parentzone.org.uk/article/roblox>

[*Source: <https://www.itv.com/news/2025-11-14/mosque-attacks-and-far-right-skins-roblox-teens-exposed-to-extremist-content>]

Signal Private Messenger

Signal is rated as 13+ on the App store. It is a messaging app, where users can text, send voice messages and photos plus participate in group chats and calls. There are no parental controls currently available. As with all messaging apps, the risks can include bullying and viewing inappropriate content. Find out more here: <https://www.nspcc.org.uk/keeping-children-safe/online-safety/social-media/chat-apps/>

Users of this guide do so at their own discretion. No liability is entered into. Current as of the date released 01.12.25. The inclusion of any links does not imply any affiliation with or endorsement of the linked websites, documents, or videos, nor are we claiming any ownership.

Discord

Discord is a social networking app originally designed for gamers but is now used by lots of different people to chat to each other online. The minimum age to access Discord is 13. The App store rates it as 17+.

Discord is made up of servers, which are spaces for groups to chat, upload files and share images etc. Anybody can set up a server, and they can either be public or private. Users can video call and send direct messages to other individuals or groups. Children who play online games such as Fortnite may use Discord to chat whilst playing the game (**rather than using the game's own chat facility**). In-app purchases are available through Discord's subscription service called Nitro.

How can I make it safer?

Discord have created a Family Centre, which provides further information about what Discord is, as well as information about different safety settings available:

<https://discord.com/safety-family-center>

As always, we would encourage you to chat to your child to see why they use Discord and ensure that they know how to block users and what to do if they see any inappropriate content. It is important to be aware that Discord does include video/voice calling which cannot be filtered. **Discord is used by an array of users and therefore adult content can be found on Discord as well as inappropriate language.** Discord have produced this article, which answers frequent questions: <https://discord.com/safety/360044149591-answering-parents-and-educators-top-questions>

Would you like to read this newsletter in a different language? You can use the translate tool on our web version: <https://www.knowsleycks.org.uk/december-2025-primary/>